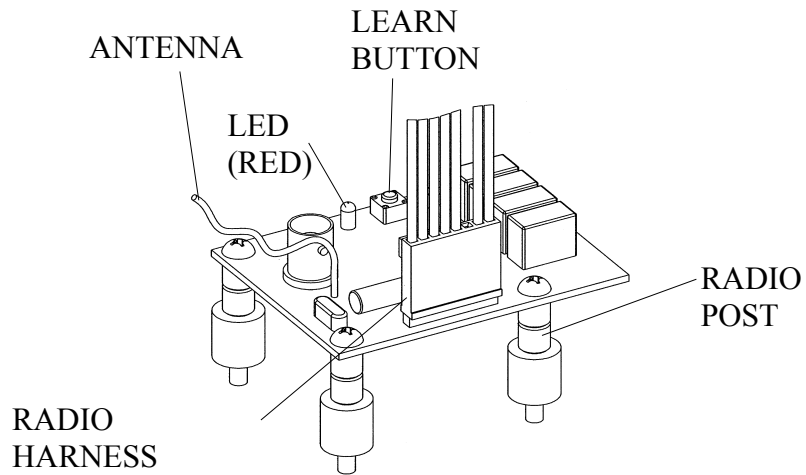
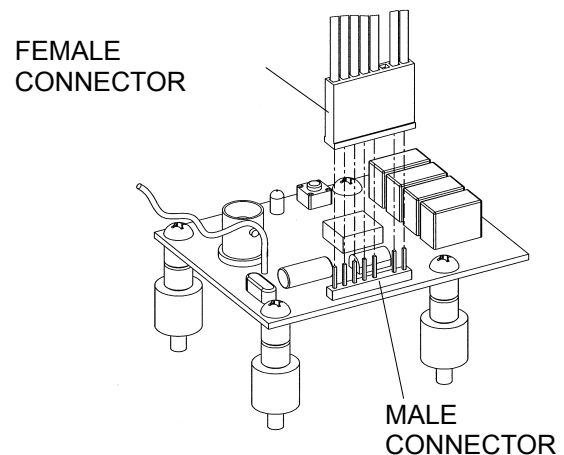


### Components

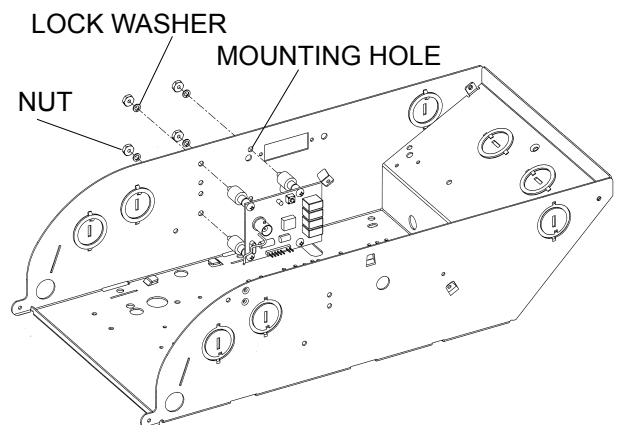


### Installation Instructions

1. Turn operator power OFF.
2. Mate male and female connectors, as shown in figure.

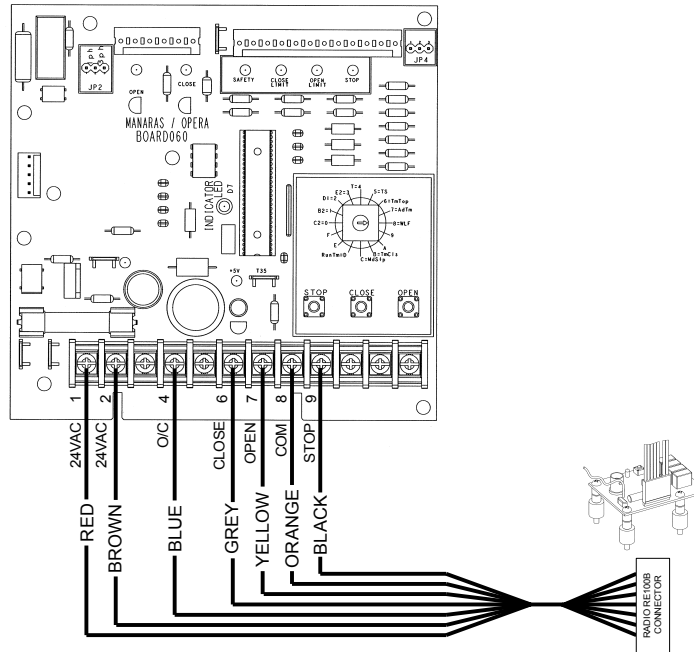


3. Locate (or drill) mounting holes inside the control box.
4. Pass the radio-posts through the mounting holes.
5. Use lock washers and nuts to secure the radio receiver inside the control box.
6. Straighten antenna. Antenna must exit from the operator's control box. Keep antenna wire far away from any potential pinch point.

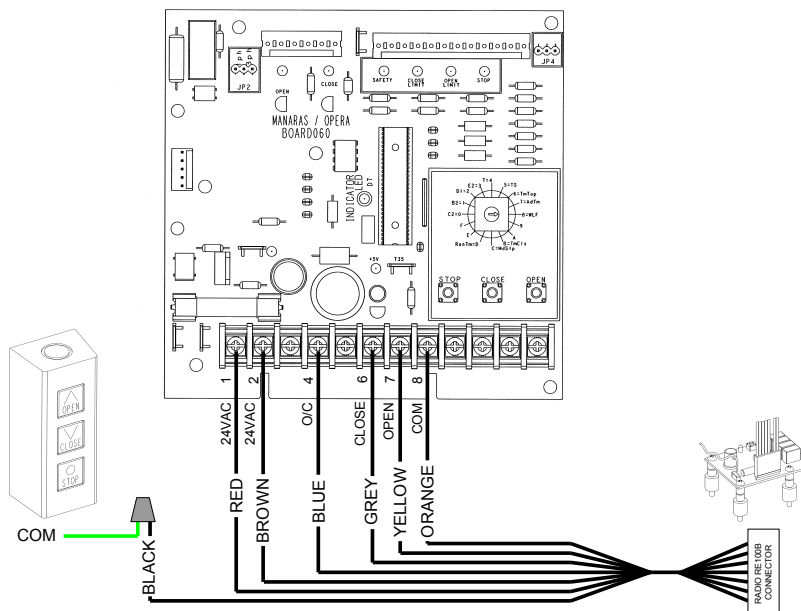


### Wiring Instructions

1. Determine the type of installation:
  - 1.1. ECB Operator **WITHOUT** a push-button station:
    - a) Connect the radio receiver as per figure below.



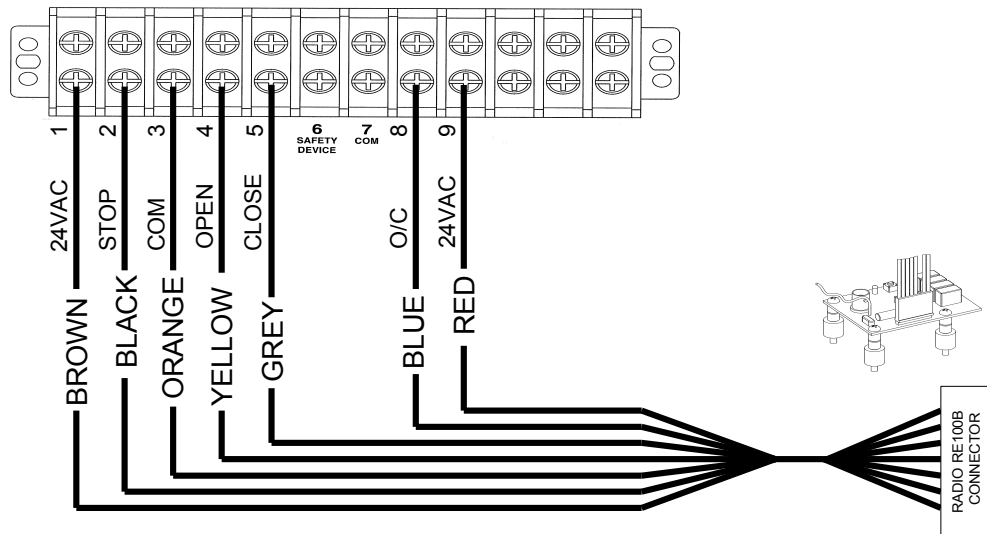
- 1.2. ECB Operator **WITH** one or more push-button station(s):
  - a) On the terminal strip, remove the (#8) common wire, which comes from the push-button station.
  - b) Merge the push-button's common wire with the BLACK wire coming from the radio receiver, using a wire nut.
  - c) Connect the radio receiver as per figure below.



## Instructions

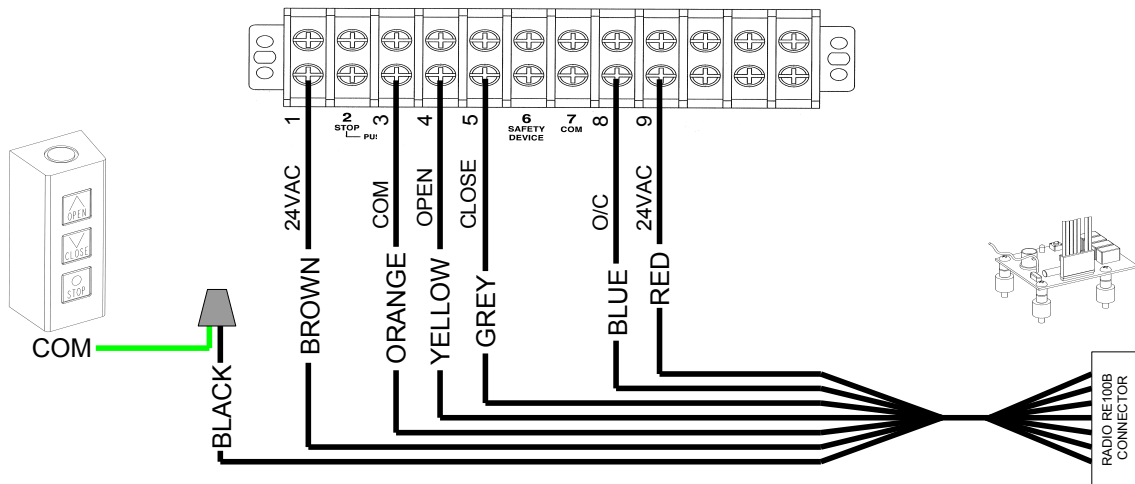
### 1.3. Hardwired Operator **WITHOUT** a push-button station:

- a) Connect the radio receiver as per figure below.



### 1.4. Hardwired Operator **WITH** one or more push-button station(s):

- a) On the terminal strip, remove the (#3) common wire, which comes from the push-button station.  
 b) Merge the push-button's common wire with the BLACK wire coming from the radio receiver, using a wire nut.  
 c) Connect the radio receiver as per figure below.




2. Turn power ON. The radio receiver LED (RED) should be ON.


## Programing Instructions

To MATCH a Transmitter to the Receiver	To DELETE ALL Transmitters from the Receiver memory
1. HOLD the Receiver's <b>LEARN</b> button until the LED flashes (approx. 2 sec.) (frequency of 1 sec. ON / 1 sec. OFF). 2. HOLD any button on the Transmitter until the Receiver's LED stops flashing.	1. HOLD the Receiver's <b>LEARN</b> button until the LED flashes (approx. 10 sec.) (frequency of 1/3 sec. ON / 1/3 sec. OFF).

### Radio Control Functions – 1-Button Transmitter

Transmitter	Modes	Functions	Programming (On operator's ECB)
 <p>1-Button Transmitter</p>	Commercial Sequence - 1-Button	<p>OPEN / CLOSE → Button</p> <p><b>Door is CLOSED:</b> - Click Button → Door OPENS FULLY</p> <p><b>During UPWARD Travel:</b> - Click Button → Nothing happens</p> <p><b>Door is OPENED:</b> - Click Button → Door CLOSES FULLY</p> <p><b>During DOWNWARD Travel:</b> - Click Button → Door reverses and OPENS FULLY</p> <p><b>Door is STOPPED:</b> - Not possible in this mode. Door is either FULLY OPENED or FULLY CLOSED.</p>	<p>Standard default mode.</p> <ol style="list-style-type: none"> <li>1. Door is in fully CLOSED position.</li> <li>2. On ECB, verify if the close limit switch is activated (CLOSE LED is ON).</li> <li>3. On ECB, set select switch on <b>9 = SBC</b>.</li> <li>4. On ECB, press “<b>STOP</b>” button.</li> <li>5. On ECB, select run mode (<b>1, 4, or 5</b>).</li> </ol>
	<p>Single Button Control (SBC)</p> <p>Available with the Electronic Control Board (ECB) only.</p> <p>Alternating Sequence</p>	<p>OPEN / STOP / CLOSE → Button</p> <p><b>Door is CLOSED:</b> - Click Button → Door OPENS</p> <p><b>During UPWARD Travel:</b> - Click Button → Door STOPS</p> <p><b>Door is STOPPED:</b> - Click Button → Door CLOSES</p> <p><b>During DOWNWARD Travel:</b> - Click Button → Door STOPS</p> <p><b>Door is STOPPED:</b> - Click Button → Door OPENS</p> <p><b>Note:</b> If the door is STOPPED for more than 2 minutes, the next movement will be UPWARD regardless of the previous movement.</p>	<ol style="list-style-type: none"> <li>1. Door is in fully CLOSED position.</li> <li>2. On ECB, verify if the close limit switch is activated (CLOSE LED is ON).</li> <li>3. On ECB, set select switch on <b>9 = SBC</b>.</li> <li>4. On ECB, press “<b>OPEN</b>” button.</li> <li>5. On ECB, select run mode (<b>1, 4, or 5</b>).</li> </ol>

### Radio Control Functions – 3-Button Transmitter

Transmitter	Modes	Functions	Programming
 3-Button Transmitter	Three Button Transmitter	1.OPEN → Small Button 2.CLOSE → Medium Button 3.STOP → Large Button	1.Unscrew the screw on the back of the Transmitter. 2.Insert a flat screwdriver in the rounded corner of the Transmitter. 3.Pry open the Transmitter's cover. 4.Position jumper on <b>SD</b> (Single Door). 5.Put the Transmitter's cover back-on and fasten the screw. 6.On ECB, select run mode <b>(1, 4, or 5)</b> .
	3 x 1-Button	1.DOOR #1 → Small Button 2.DOOR #2 → Medium Button 3.DOOR #3 → Large Button  Each button acts separately as a 1-Button Transmitter (Commercial Sequence or SBC depends on operator settings).	1.Unscrew the screw on the back of the Transmitter. 2.Insert a flat screwdriver in the rounded corner of the Transmitter. 3.Pry open the Transmitter's cover. 4.Position jumper on <b>MD</b> (Multiple Doors). 5.Put the Transmitter's cover back-on and fasten the screw. 6.On ECB, select run mode <b>(1, 4, or 5)</b> .

**Note:** You can match 3-Button Transmitters AND 1-Button Transmitters with the same Receiver.  
 One receiver will accept up to 50 transmitters.

For further information, please consult the operator's Installation & Instruction Manual or contact our Technical Support Department at **1-800-361-2260**.

## **HOW TO ORDER REPAIR PARTS**

**DEVANCO  CANADA**

19192 HAY ROAD, UNIT Q  
SUMMERSTOWN, ON, K0C 2E0

TOLL FREE **1-855-931-3334**  
[WWW.DEVANCOCANADA.COM](http://WWW.DEVANCOCANADA.COM)

**WHEN ORDERING REPAIR PARTS  
PLEASE SUPPLY THE FOLLOWING INFORMATION:**

- ✓ **PART NUMBER**
- ✓ **DESCRIPTION**
- ✓ **MODEL NUMBER**